

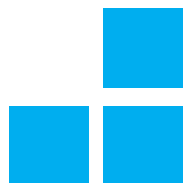
VBM Tube Fixations

VBM offers different Tube Fixations for Endotracheal Tubes (oral / nasal), Tracheostomy Tubes, Laryngeal Tubes or Laryngeal Masks.

Application:

- Anesthesia
- Intensive Care (long-term intubation)
- Emergency
- Home Care

VBM Tube Fixations do not require the use of adhesives on the patient's skin. The soft materials are comfortable for the patient and prevent against pressure sores.



Endofix Oral II

oral ET Tube fixation for Anesthesia and Intensive Care

- biteblock protects tube from occlusion
- lateral holes allow mouth access
- flexible flange adapts to patient's face
- soft cushion prevents against pressure sores
- tube fixation tape, safe fixation of the tube through adhesive and velcro fastener
- necktape for safe fixation



with foam necktape

Patient	ET Tube	Color code	REF	box
Child	4.5 - 6.5mm	yellow	40-9005-010	10
Adult	6.5 - 8.5mm	white	40-9005-030	10
Adult large	8.5 - 10.0mm	blue	40-9005-040	10
Adult extra large	10.0 - 11.0mm	purple	40-9005-050	10



with elastic necktape

Patient	ET Tube	Color code	REF	box
Child	4.5 - 6.5mm	yellow	40-9006-010	10
Adult	6.5 - 8.5mm	white	40-9006-030	10
Adult large	8.5 - 10.0mm	blue	40-9006-040	10
Adult extra large	10.0 - 11.0mm	purple	40-9006-050	10

Endofix Nasal

nasal ET Tube fixation for Intensive Care

- flexible flange adapts to patient's face
- soft cushion prevents against pressure sores
- tube fixation tape, safe fixation of the tube through adhesive and velcro fastener
- necktape for safe fixation



with foam necktape

Patient	REF	box
Adult	40-4005	25

with elastic necktape

Patient	REF	box
Adult	40-4006	25

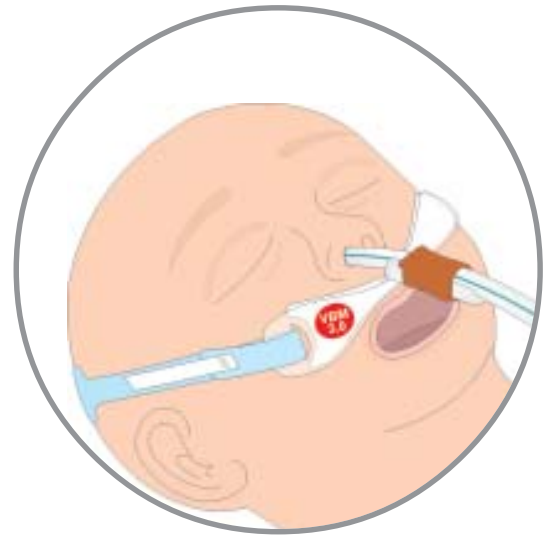


Baby-Endofix

oral / nasal ET Tube fixation for babies

- flexible flange adapts to baby's face
- soft cushion prevents against pressure sores
- necktape for safe fixation

ET Tube	Color code	REF	box
2.5 mm	yellow	40-1005-025	25
3.0 mm	red	40-1005-030	25
3.5 mm	green	40-1005-035	25
4.0 mm	blue	40-1005-040	25



Rescuefix

oral ET Tube fixation for emergency use

- clamp design allows fast and safe tube fixation
- biteblock protects tube from occlusion
- lateral holes allow mouth access
- flexible flange adapts to patient's face
- soft cushion prevents against pressure sores
- slide stick to easily guide the necktape under the patient's neck
- necktape for safe fixation

Patient	ET Tube	Color code	REF	box
Child	5.0 - 6.5mm	yellow	40-9005-111	10
Adult	7.0 - 10.0mm	white	40-9005-333	10



Clamp design



Tube Holder

oral / nasal ET Tube fixation

- safe fixation through self-adhesive velcro
- soft foam material is comfortable for the patient

Patient	length	REF	box
Child / Adult	55cm (22")	40-8010-033	10
Adult	65cm (26")	40-8010-044	10

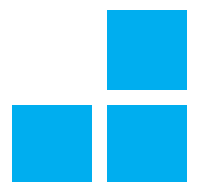


Endotape

oral / nasal ET Tube fixation

- safe fixation through elastic tapes
- soft foam material is comfortable for the patient
- universal length, for Child and Adult

Patient	length	REF	box
Child / Adult	54cm (21")	40-8018-044	10



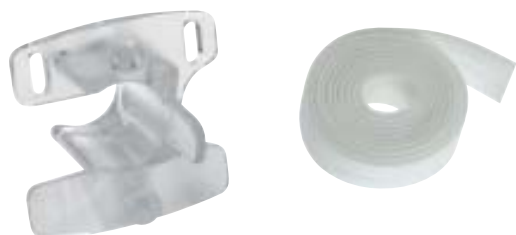
Biteblock

oral tube fixation for ET Tube, Laryngeal Tube and Laryngeal Mask

- tube clips into biteblock and prevents it from occlusion

autoclavable up to 134°C (273°F)

Size	for	Tube size	REF	box
4	ET Tube	6.5 - 8.0mm	40-70-040	25
5	ET Tube Laryngeal Tube Laryngeal Mask	8.5 - 11.0mm 2 + 2.5 2 + 2.5	40-70-050	25
6	Laryngeal Tube Laryngeal Mask	3, 4, 5 3, 4, 5	40-70-060	25



Guedel Airway

oropharyngeal airway with ET Tube fixation possibility

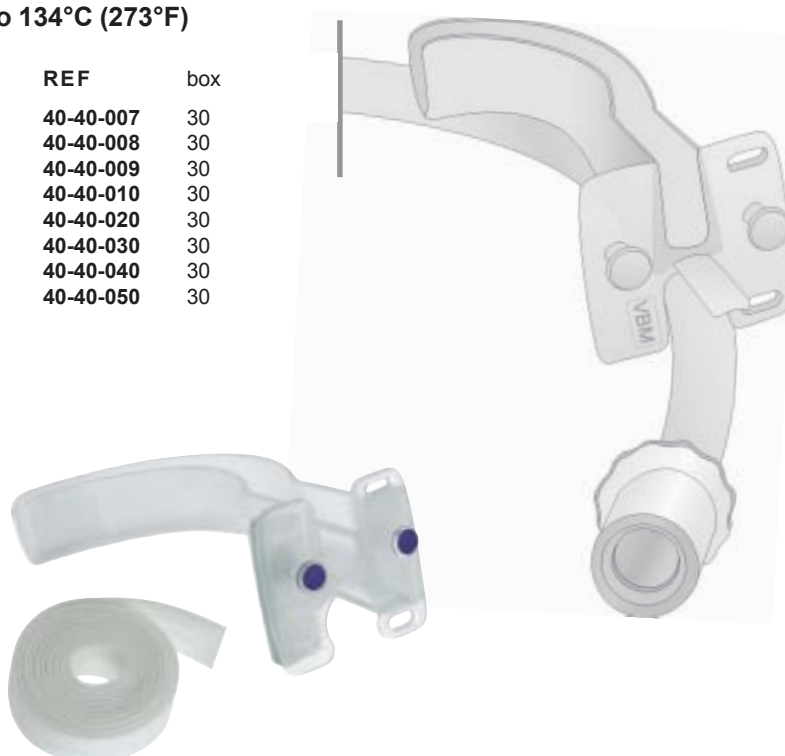
- rail and lateral clamp design allow direct fixation of the ET Tube to the Guedel Airway
- hard biteblock but soft and atraumatic tube
- same lumen from proximal to distal end allows the use of largest possible suction catheters
- one side open with smooth inner surface facilitates suctioning and easy cleaning of the product

autoclavable up to 134°C (273°F)

Size	Color code	REF	box
000	light blue	40-40-007	30
00	marine	40-40-008	30
0	black	40-40-009	30
1	white	40-40-010	30
2	green	40-40-020	30
3	yellow	40-40-030	30
4	red	40-40-040	30
5	purple	40-40-050	30

for single use, sterile
with elastic necktape

Size	Color code	REF	box
000	light blue	40-26-007-1	30
00	marine	40-26-008-1	30
0	black	40-26-009-1	30
1	white	40-26-010-1	30
2	green	40-26-020-1	30
3	yellow	40-26-030-1	30
4	red	40-26-040-1	30
5	purple	40-26-050-1	30



Tracheostomy Necktapes

tube fixation for tracheostomized patients

- **with velcro fastener, blue**

Material: foam

Patient	length	REF	box
Child / Baby	355mm (14")	40-0005-011	10
Adult / Child	470mm (19")	40-0005-033	10
Adult, extra large	520mm (21")	40-0005-044	10



- **with velcro fastener, skin colored**

Material: cotton covered foam

Patient	length	REF	box
Child / Baby	340mm (13")	40-0008-011	10
Adult / Child	490mm (20")	40-0008-033	10
Adult, extra large	590mm (23")	40-0008-044	10



- **separable with velcro fastener, skin colored**

Material: cotton covered foam

Patient	length	REF	box
Adult / Child	400mm (16")	40-0066-033	10



- **separable with hook fastener, skin colored**

Material: cotton covered foam

Patient	length	REF	box
Adult / Child	350mm (14")	40-0099-033	10

