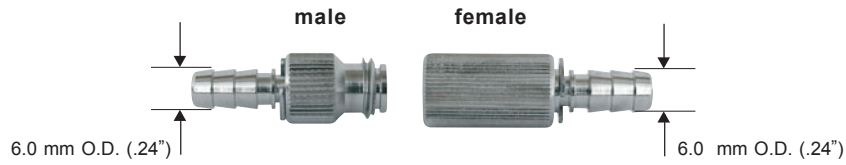


# Metal Adapters

reusable, autoclavable up to 134°C (273°F)

## Tube Connector

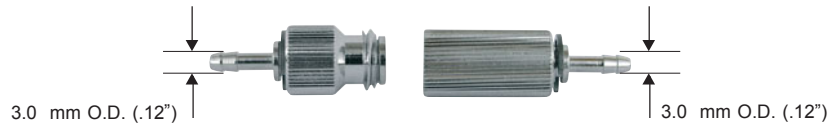
**REF 22-40-000**  
Box 5



**REF 22-40-111**

## Tube Connector

**REF 22-44-000**  
Box 5



**REF 22-44-111**

## Luer Lock Adapter with M5 thread

**REF CHLLM05**  
Box 5



**REF CHLLF05**

## Luer Lock Adapter with M6 thread

**REF CHLLM06**  
Box 5



**REF CHLLF06**

## Luer Lock Adapter

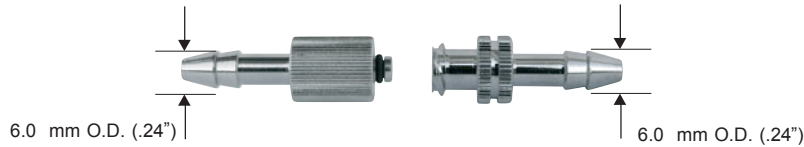
**REF CHLLM20**  
Box 5



**REF CHLLF20**

## Luer Lock Adapter

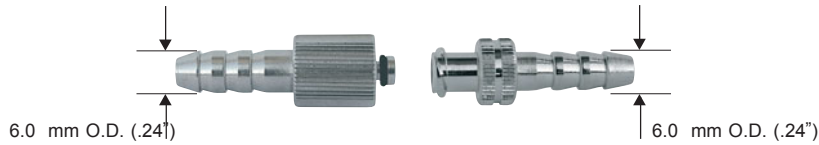
**REF CHLLM30**  
Box 5



**REF CHLLF30**

## Luer Lock Adapter

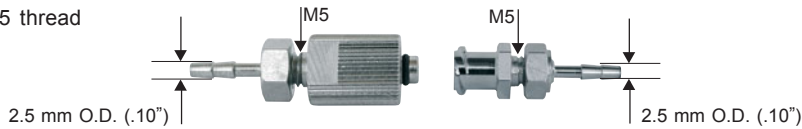
**REF CHLLM40**  
Box 5



**REF CHLLF40**

## Luer Lock Adapter with M5 thread

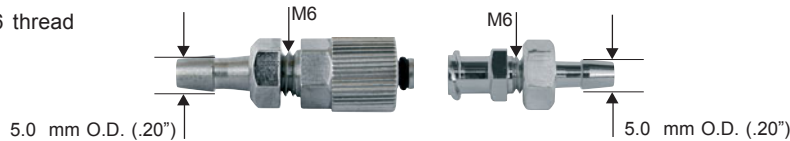
**REF CHLLMB20**  
Box 5



**REF CHLLFB20**

## Luer Lock Adapter with M6 thread

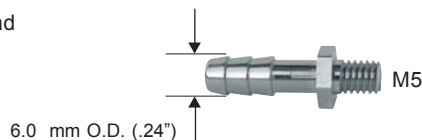
**REF CHLLMB30**  
Box 5



**REF CHLLFB30**

## Tube Connector with M5 thread

**REF 20-18-606**  
Box 5



## Positive Locking Connector

**REF SLZM30** 4.5 mm O.D. (.18")  
Box 5



4.5 mm O.D. (.18") **REF SLZF30** Box 5

**REF SLZM40** 6.0 mm O.D. (.24")  
Box 5



4.5 mm O.D. (.18") **REF SSLZF30** Box 5  
self-locking

6.0 mm O.D. (.24") **REF SLZF40** Box 5

6.0 mm O.D. (.24") **REF SSLZF40** Box 5  
self-locking